

1, Gilju-ro, Bucheon-si, Gyeonggi-do, Republic of Korea 1
 Inside the Korea Manhwa Contents Agency |
 TEL. +82-(0)32-310-3090~1

Exhibition Map and Viewing Order

Take the escalator to level 3 ▶ Special Exhibition Hall 2 ▶ Permanent Exhibition Hall ▶ 4D Cinema ▶ Go up to level 4 ▶
 Manhwa Experience Hall ▶ Go down to the level 2 ▶ Manhwa Library ▶ Go down to level 1 ▶ Special Exhibition Hall 1
 ▶ Animation Cinema ▶ Museum Shop



» Directions



Subway Line 7

Samsan Gymnasium Station (Subway Line 7), Exit 5 ▶
 3 minutes walk

Bus

Songnae Station : no. 37 Bugae Station : no. 79
 Hwagok Station : no. 59-1

Car

The 1st Capital Region Ring Expressway
 · Jungdong IC (towards Ilsan) ▶ Turn right after exit ▶
 go straight around 300m then turn right
 · Jungdong IC (towards Pangyo) ▶ Turn left after exit ▶
 go straight around 300m then turn right

* See the museum's website for directions on how to get here
<http://new.bicof.com/kr/sub.html?pid=14>

» Exhibition Guide

Open Hours | 10:00~18:00 (Entrance closes at 17:00)

Closed | Every Monday, January 1, the day before and
 on the holidays of Seollal and Chuseok long weekend

Telephone | +82-(0)32-310-3090~1

Homepage | <http://www.komacn.kr/comicsmuseum>

Address | 1, Gilju-ro, Bucheon-si, Gyeonggi-do,
 Republic of Korea

» Admission

Category	For	Admission fees
Individual	ages from 36 months to 64 years old	5,000 KRW
Family	2 adults + 2 children	15,000 KRW
Groups	paid visitors for groups over 20	4,000 KRW

* Located on level 3 the 4D Animation cinema
 costs an additional 1,000 KRW

» Exhibition Etiquette



KOREA MANHWA MUSEUM



Special Exhibition Hall 1-3F

A space where you can enjoy special comic exhibitions of various topics



Permanent Exhibition Hall 3F

A space where exhibits related to the history of Korean comics can be displayed by period, and where you can recall those days through the recreation of old memorable comic book rooms, alleys, etc.



Permanent Exhibition Hall 4F

An experiential space where you can become a comic artist and become the main character in a comic



Comic Library 2F

The nation's largest comic-specialized public library with about 300,000 comic books and related materials

General Reading Room

A reading space where anyone can freely read and enjoy comic books

Video Reading Room

A space to view animation DVD video materials

Children's Reading Room

A reading space full of children's comics

Data Storage Room

A space for the preservation of all comics collected at the Comic Library



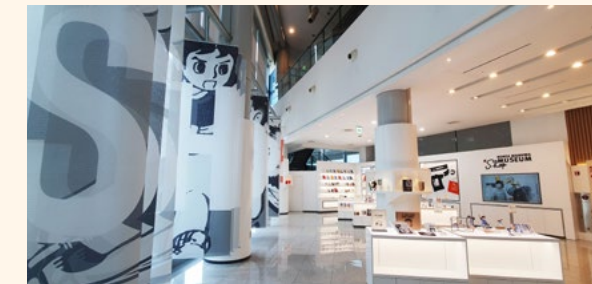
Experience Education Room 2F

An educational space where people can enjoy and learn about comics through the "Comic Experience Education" and "Comic Imagination Academy" educational programs for groups

※ Applications for group experience training: Pre-reservation system for group visitors (10 people or more)
※ Inquiries : 032.310.3107



Museum Shop 1F



Cartoon Theater 1F [Children's Theater]

A space where you can see a variety of video and performance programs from animation, movies, and even character performances



※ Program and rental inquiries : 032.310.3045

Other Facilities 1F

